

Modelling, Simulation and Optimization of a European-Wide Logistics Network

Erik Pitzer and Gabriel Kronberger

FH OÖ (University of Applied Sciences, Upper Austria)



Geleen, 5. June 2015

UNIVERSITY
OF APPLIED SCIENCES
UPPER AUSTRIA



HEAL
Heuristic and Evolutionary
Algorithms Laboratory

This project has received funding from the European Union's Seventh Programme for research, technological development and demonstration under grant agreement No 282873

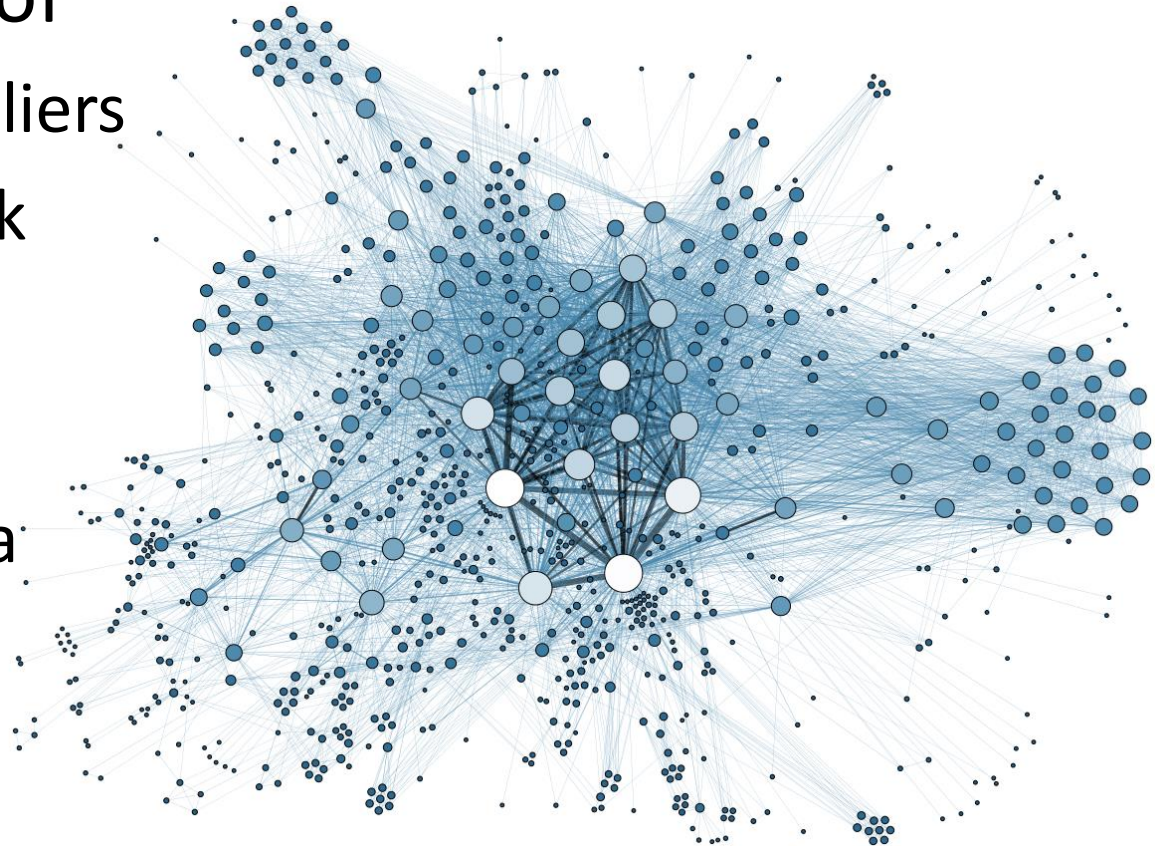
Motivation

- Is decentral biofuel production economic?
 - limited economies of scale
- possible advantages
 - regional added value
 - mitigate transport volume
 - mitigate low energy density

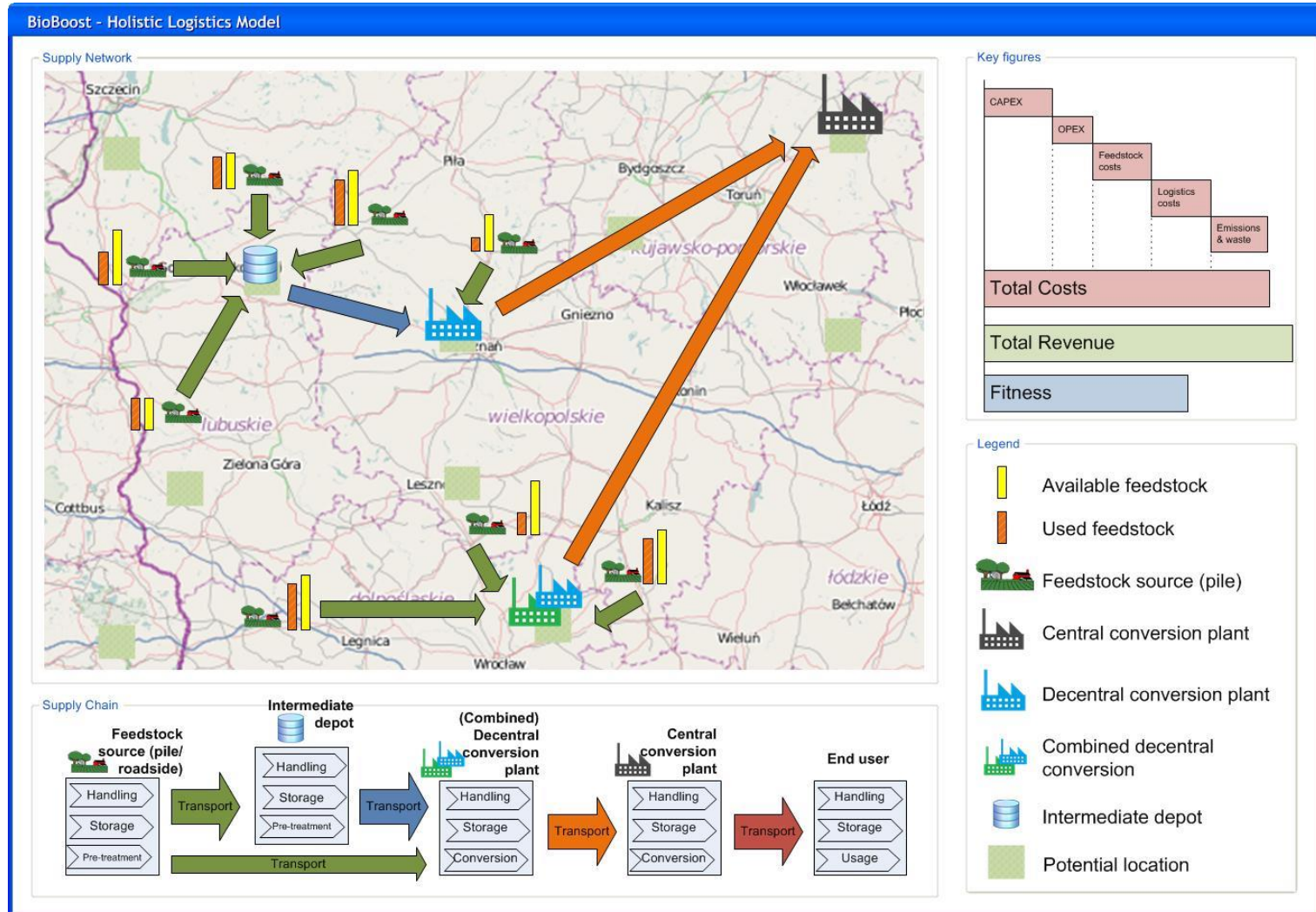


Vision

- optimal choice of
 - feedstock suppliers
 - logistic network
 - plant location
 - plant size
 - catchment area
- many factors to consider



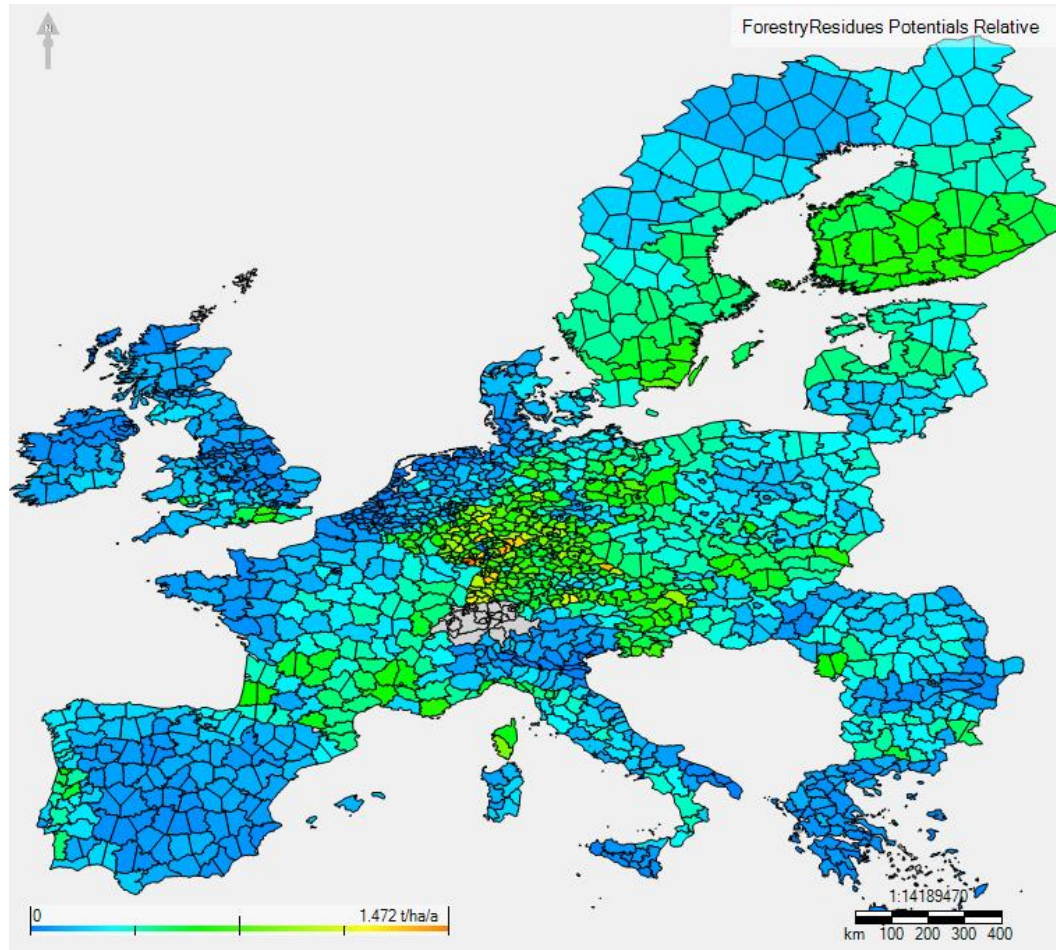
Vision



Required Data

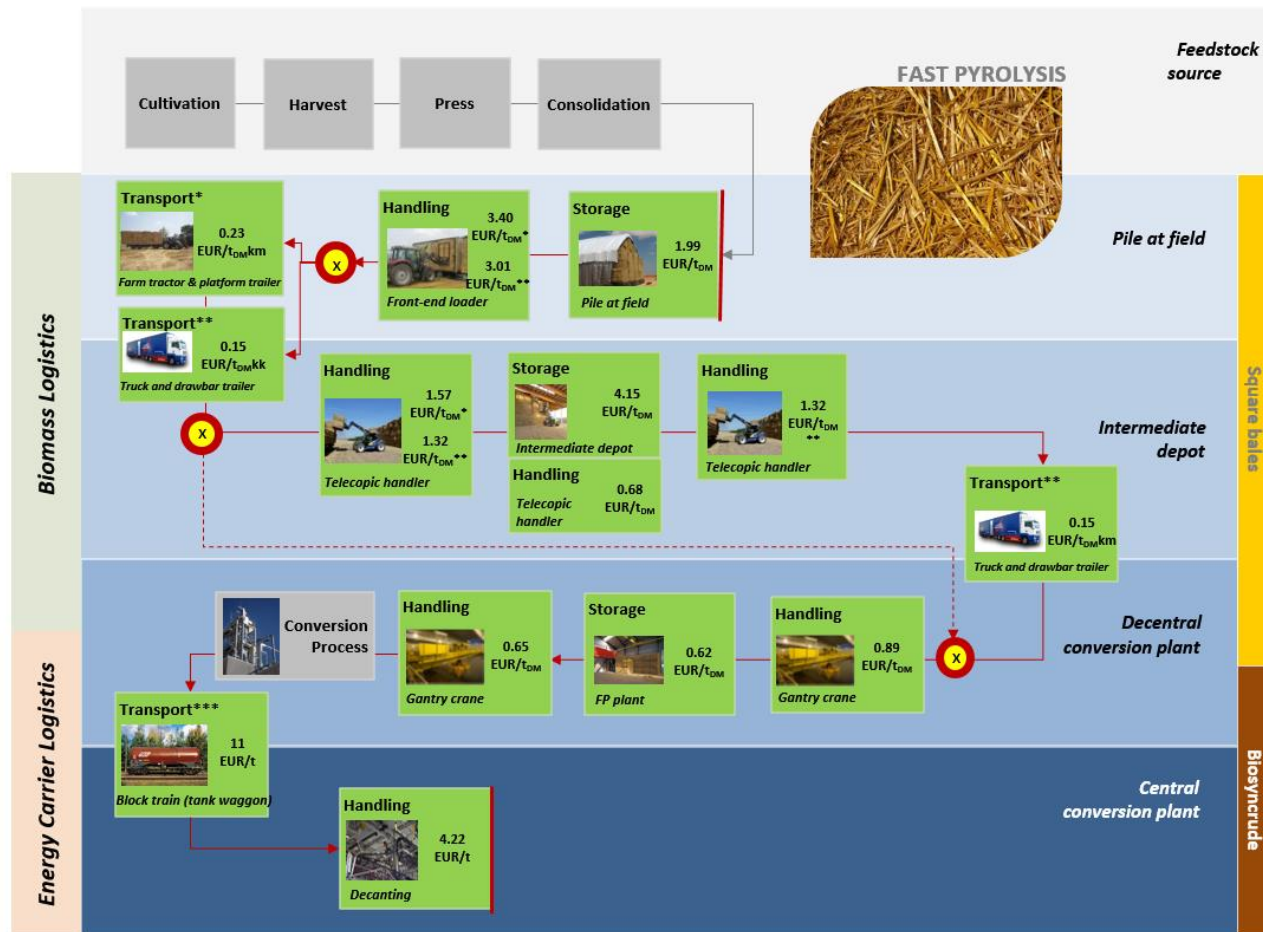
- feedstock potentials (technical)
- market price (and development)
- transport modes & costs
- routes
- conversion possibilities (and scaling)
- product costs (feedstock, output, wastes)
- regional influences (labor, invest., infrastructure)

Feedstock Potentials



<http://iung.neogis.pl/geoportal/>

Logistics Concept



Conversion Parameters



conversions:

- label: FastPyrolysis
- feedstock: Straw
- safety-stock: 365 # days
- dry-matter-loss: 0.08 # fraction
- storage:
 - investment: 0.15
 - labor: 0.35
 - other: 2.1
- products: # [t/t]
 - Biosyncrude: 0.675676
 - CO2-green: 0.324324
 - WaterVapor: 0.108108
 - CoolingWater: -0.344595
 - ElectricityIn: -0.087838
- main-product: Biosyncrude
- cost: 0 # [EUR/t]
- design-capacity: 219123.38028 # t/a
- construction: 11003716.52 # EUR/a
- maintenance: 7278442.59 # EUR/a
- construction-scaling-exponent: 0.7
- maintenance-scaling-exponent: 1 #factor
- utilization-factor: 0.913 # 8000 h/a
- available-maintenance-factor: 1
- max-capacities: { Default: 660000 } # 300%
- min-capacity: 125853 # 57%

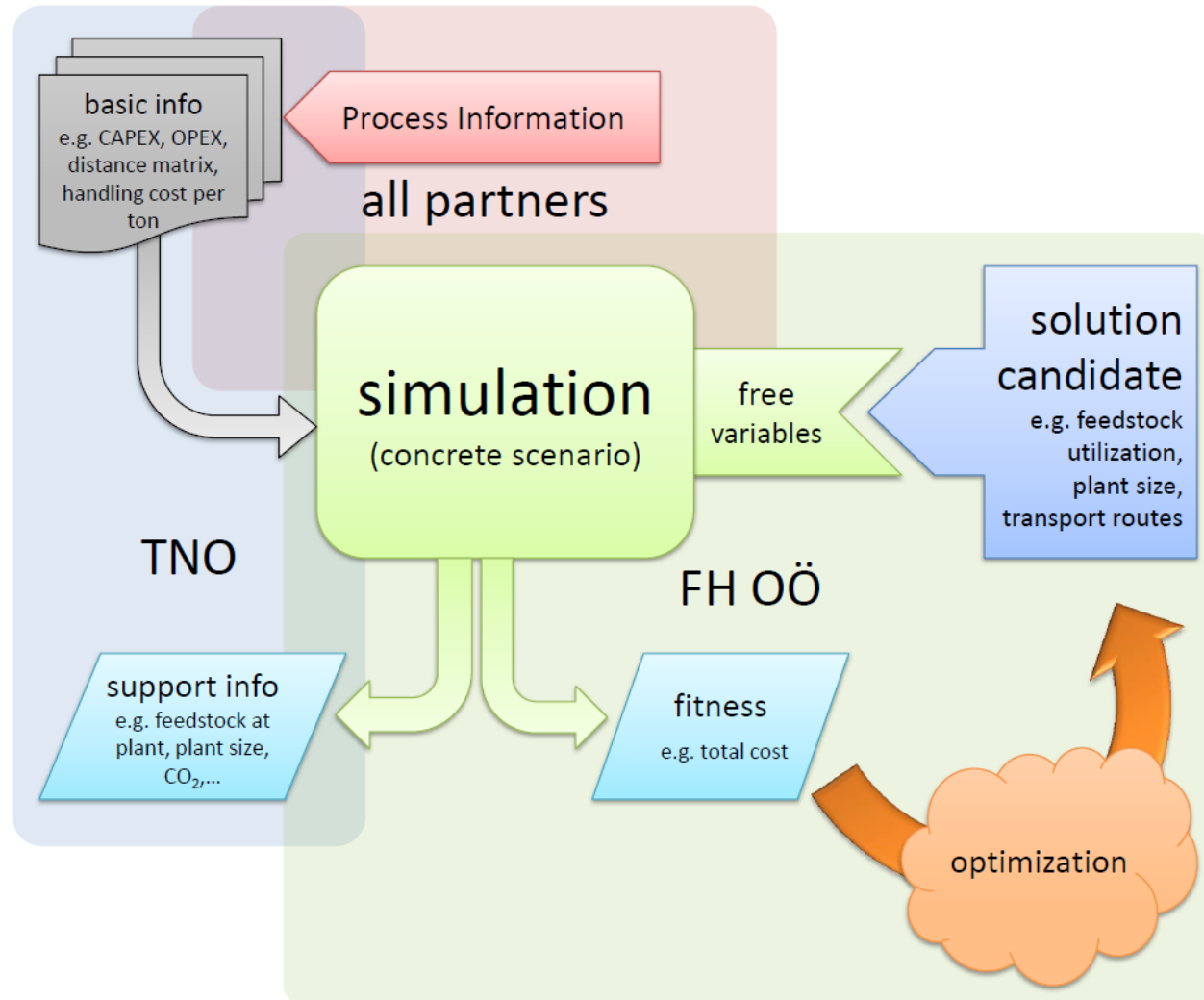
Scenario Simulation

- target values
 - return on investment
 - total amounts (ramping up)
- many free variables
- many more variations

Simulation Efficiency

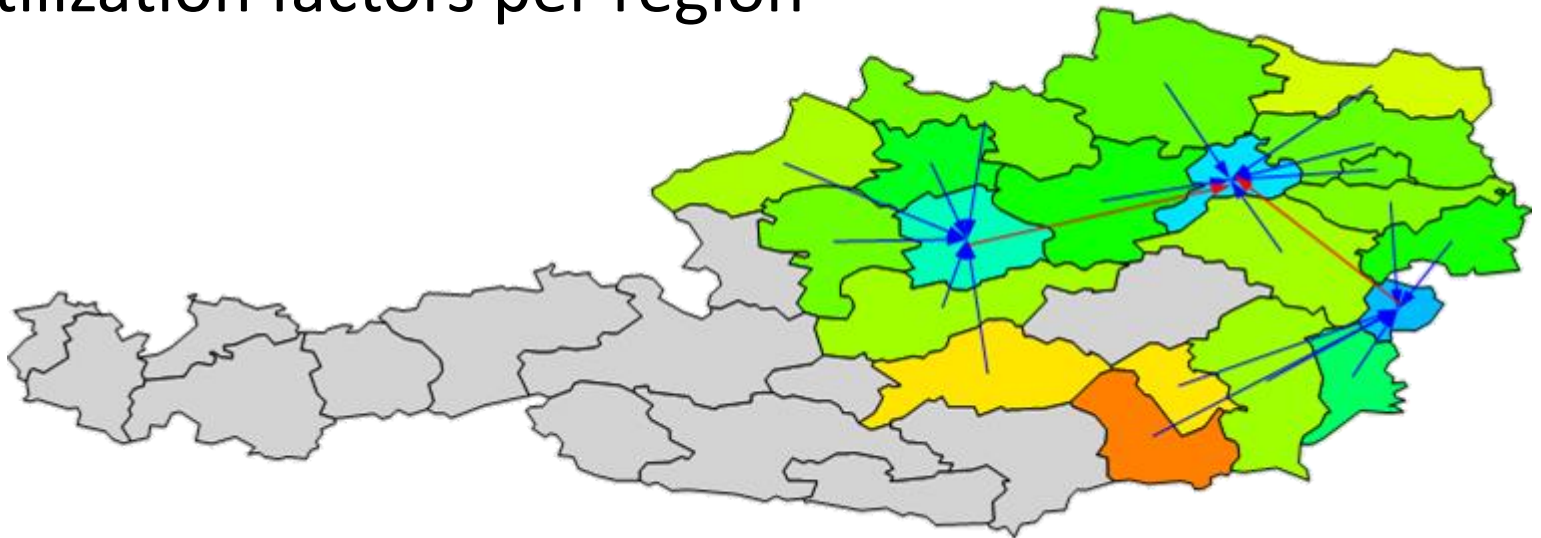
- aggregations
 - yearly averages
 - NUTS3 regions
- route pre-calculation (distance matrix)

Simulation-based Optimization



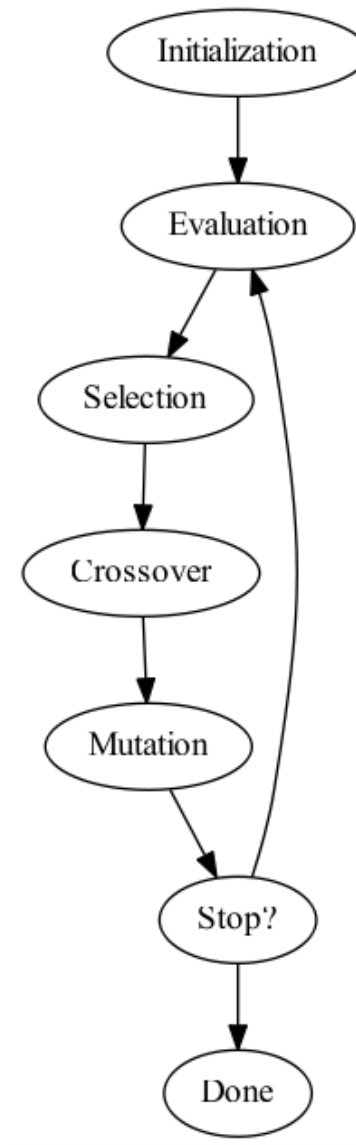
Solution Space Reduction

- implicit (“smart”) choices for variables
- limits variables to
 - transport targets per product
 - utilization factors per region



Scenario Evolution

- evolution of scenarios
 - population based (“Evolution Strategy”)
 - mutation i.e. moving/scaling plants
 - crossover



Results: Generic Model

- open-source software tool
 - plugin for HeuristicLab
 - <http://dev.heuristiclab.com>
- adaptable to other situations
 - e.g. raise transport tonnage allowance and reduce transport costs

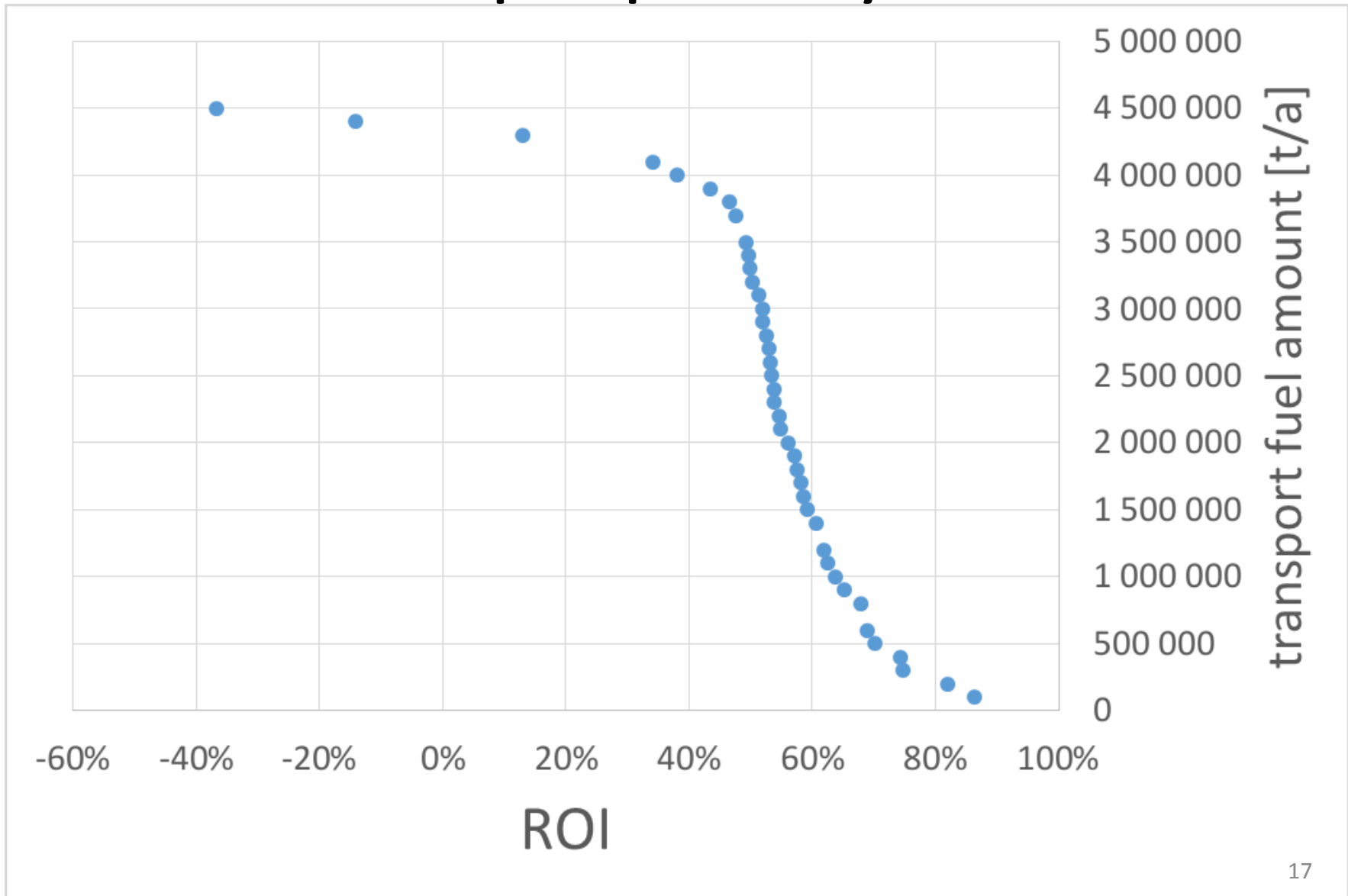
Results: Fast Evaluation

- several hundred scenarios per second
 - extended EU scenarios (1500 regions)
 - two echelons (decentral + central)
 - ROI and/or total amount
- 1-2 days per optimization
(300-600 k generations)

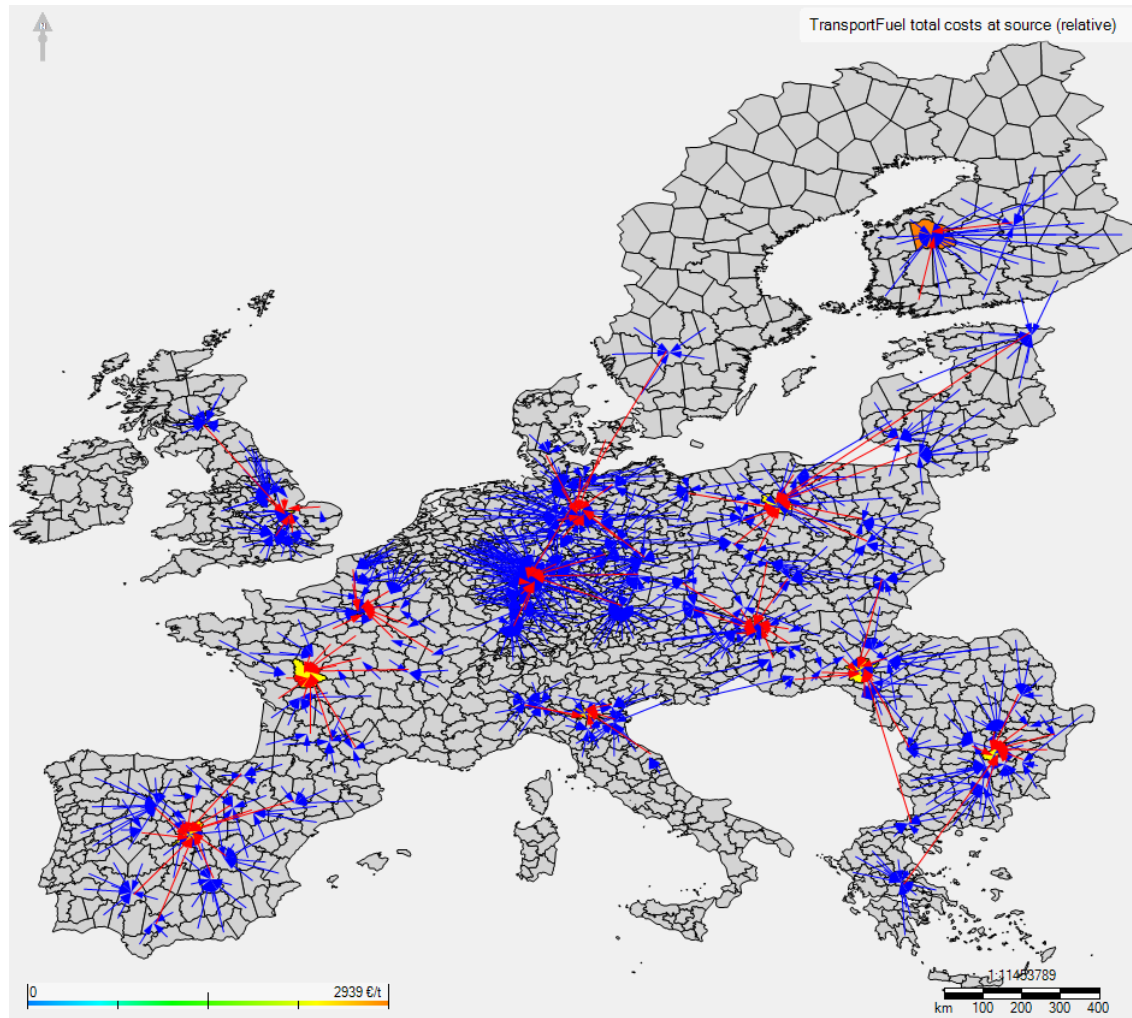
Results: In Depth Analysis

- more than 120 maps with different values e.g.
 - purchased amount in each region
 - conversion costs
 - logistic costs
- CSV export

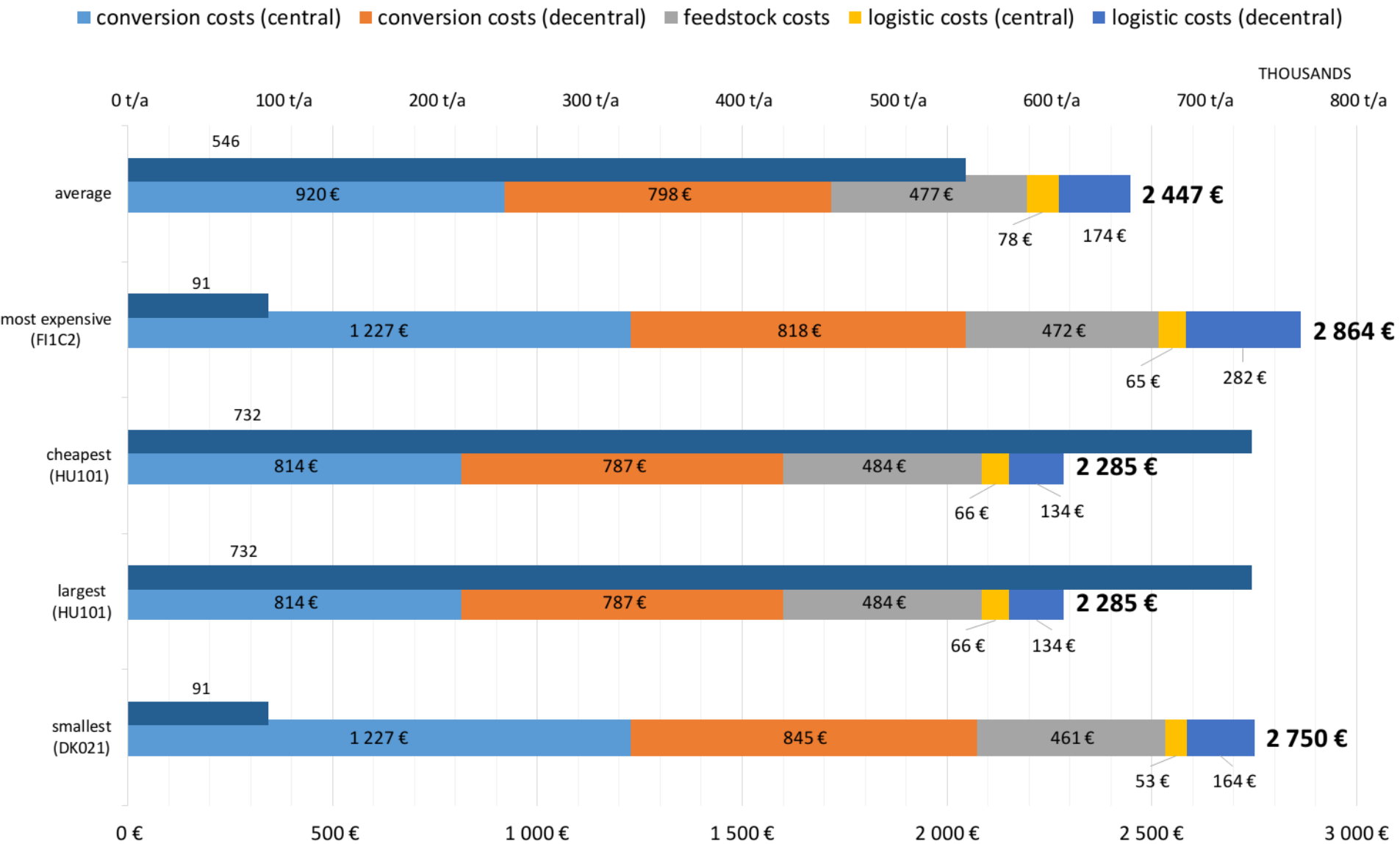
Results: Ramp-Up Analysis



Results: EU FP



Results: Fast Pyrolysis





HeuristicLab

A Paradigm-Independent and Extensible
Environment for Heuristic Optimization

<http://dev.heuristiclab.com>



UNIVERSITY
OF APPLIED SCIENCES
UPPER AUSTRIA

erik.pitzer@fh-hagenberg.at